



University of Leeds and Leeds City Council

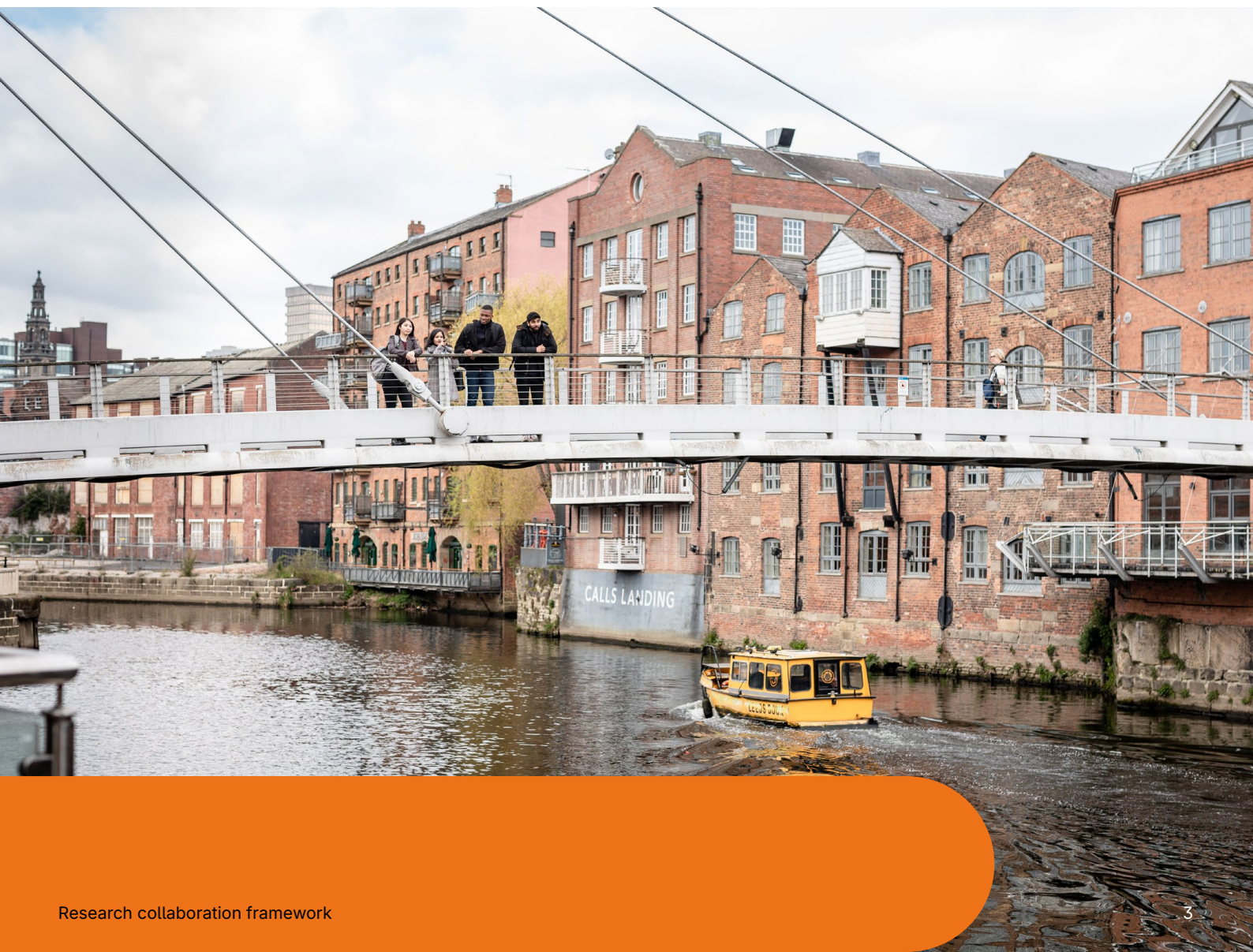
Research collaboration framework

Contents

University of Leeds and Leeds City Council collaboration framework	3
Our ambition	4
The context for the collaboration	5
The case for increased research collaboration	5
Collaborative ecosystem	6
Setting the strategic priorities	8
Leeds City Council's Areas of Research Interest	8
Prioritising knowledge needs and research opportunities	9
Collaborative infrastructure	10
Collaborative contact points	10
Data sharing	11
Governance	11
Routes to engage	12
Opening conversations	12
Scrutiny boards	12
Expert groups or policy forum meetings	13
Placements or secondments	13
Evaluation and communication	14
Monitoring and evaluation	14
Communication	14
Further resources	15
Appendix 1: Collaborative ecosystem	16
Appendix 2: Governance	21

The University of Leeds and Leeds City Council: collaboration framework

The University of Leeds and Leeds City Council research collaboration framework sets out how the two organisations will work together to mobilise the research expertise of the University to address the evidence challenges faced by Leeds City Council.





Our ambition

The Leeds Best City Ambition sets out a vision for Leeds to be the best city in the UK – one where a Team Leeds approach of strong partnership working drives us collectively towards our shared goals - tackling poverty and inequality and other key challenges we face in modern society.

As **anchor institutions**, both the University of Leeds and Leeds City Council have a strong stake in the city's future success as well as a long track record of cooperation and collaboration on which we can build.

Following a **review of collaborative activity** between the two organisations in 2019-20, we have made significant progress in strengthening opportunities to work together and broadening these out to include a more diverse range of colleagues. It is our shared ambition to continue this work, making the most of the University's capability and expertise to power evidence-informed policy development to deliver

real lasting improvements in the lives of people and communities in Leeds and wider region. We aim to be partners of choice for collaboration, combining our efforts to achieve even greater change and impact through our work.

Together, we will identify opportunities to apply existing research and expertise to the policy challenges of today; we will co-design and collaborate on new research opportunities to build our evidence base and plan for the future; and we will do all of this in a way which better connects our people and networks in line with a shared strategic direction.

The collaboration between our two organisations has enormous potential, but we also share an ambition to embrace other partners from across all sectors in an inclusive way. We will seek proactively to build broader coalitions to support our work and increase our potential impact for long term success.

The context for the collaboration

The case for increased research collaboration

As Leeds anchor institutions, Leeds City Council and the University of Leeds are committed to working in partnership to drive the city's sustainability, prosperity, social inclusivity, health and well-being.

The case for increasing research collaborations between the two organisations was set out in 2020 in the report **Unlocking the Potential of Civic Collaboration (pdf)**. Since then, the case for collaboration has only grown stronger. The impacts of the pandemic are far from over, while high energy costs and inflation are driving a cost-of-living crisis, hitting those least able to afford it the most. Local government services are under increasing strain, sat between increasing costs, tightened national government finances and increased need.

The **Best City Ambition** emphasises a Team Leeds approach, underlining that working with city partners, such as the University, is key to making Leeds the best it can be. The University similarly sets out its commitment to collaborating with civic partners and local community in its **academic strategy: 2020-2030**, with a focus on public good and driving benefit to the region through impactful challenge-led research.

This alignment in approach and motivation gives a great opportunity to work together, leveraging the strengths and expertise of both organisations, to address the pressing challenges for the city and its people.





Collaborative ecosystem

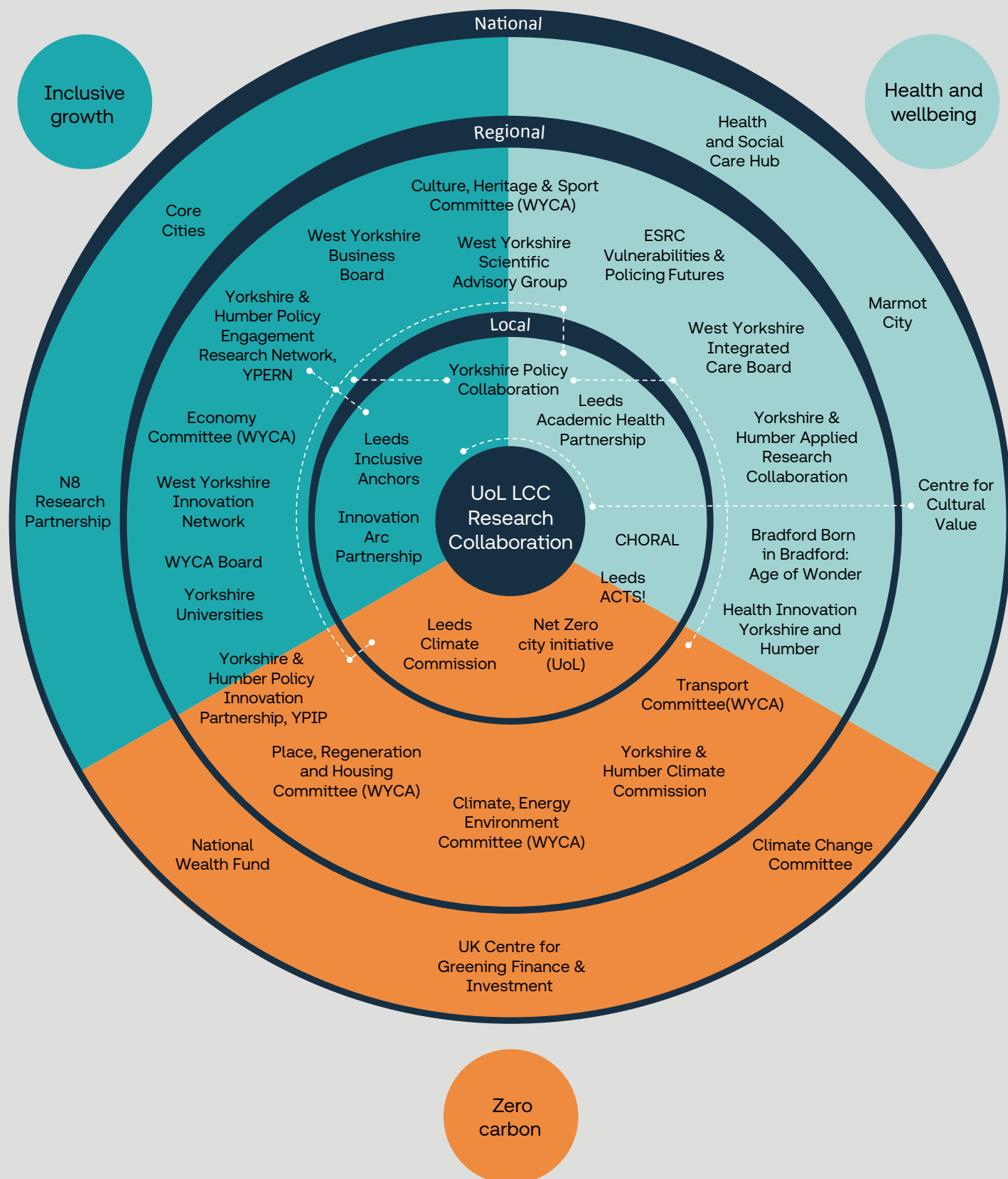
The strategic collaboration between the University of Leeds and Leeds City Council is not isolated but situated within an active landscape of collaborations and initiatives.

This connection to other activities is vital to ensure synergies are built upon and duplication avoided. The University of Leeds and Leeds City Council strategic collaboration should not be seen as exclusive relationship but an engaged part of this wider ecosystem.

Appendix 1 gives further details on the collaborations, committees/boards, and initiatives that make up the collaboration ecosystem. An indicative selection are represented in Figure 1 below.

Figure 1. The collaborative ecosystem within which the University of Leeds (UoL) and Leeds City Council (LCC) strategic research collaboration is situated. Major collaborations, committees/boards, and initiatives are mapped against the Best City Ambition 3 pillars: Inclusive growth (dark blue); Health and wellbeing (light blue); and Zero carbon (orange). They are further organised against their local, regional, or national focus, with the more immediate local context being shown in the inner circle around the UoL LCC Research Collaboration, regional context in the middle circle, and players and initiatives with a national focus placed in the outer circle. Dotted lines indicate where items have focuses in more than one area or level. West Yorkshire Combined Authority is abbreviated to WYCA.

or national focus, with the more immediate local context being shown in the inner circle around the UoL LCC Research Collaboration, regional context in the middle circle, and players and initiatives with a national focus placed in the outer circle. Dotted lines indicate where items have focuses in more than one area or level. West Yorkshire Combined Authority is abbreviated to WYCA.



Setting the strategic priorities

This section describes how Leeds City Council and the University of Leeds will identify the priorities for our research collaboration.

Leeds City Council's Areas of Research Interest

Leeds City Council communicates their key knowledge needs through a series of Areas of Research Interest.

Areas of Research Interest (ARI) were first proposed in the **Nurse Review** (2015) as a way to better communicate the research needs of Government departments. The regularly updated **Government Departments' Areas of Research Interest** provide a starting point for dialogue with researchers. This model has subsequently also been adopted by UK and devolved Parliaments.

The University of Leeds has been working closely with Leeds City Council since 2022 to adapt and trial this approach at the local government level. Our innovation in this area has been leading the way and we have been talking to many other Universities and local and combined authorities who have been looking to the Leeds example as they develop their own approaches. Since 2024, Leeds City Council now leads on developing their own ARI.



What is the aim of the Leeds City Council ARI?

Like their national Government and Parliament counterparts, the Leeds City Council ARI aim to:

- Match existing research evidence with knowledge needs in the Council for policy development and decision-making
- Provide a starting point for conversations to develop new research and collaborations or translate current knowledge into improvements in practice
- Increase the number and diversity of researchers engaging with the Council

Where can I find the Leeds City Council ARI?

The Leeds City Council's Areas of Research Interest can be found on the **Leeds Observatory Areas of Research Interest page**.



Prioritising knowledge needs and research opportunities

The focus for strategic collaborative activities between the University of Leeds and Leeds City Council will be set annually by the Collaboration Steering Group (see Collaborative infrastructure).

Priorities will be first and foremost led by the knowledge needs of Leeds City Council, as set out by the Areas of Research Interest or, in the case of emergent needs, communicated directly by Leeds City Council through the collaboration's governance structure.

The work may be further prioritised taking into account capacity at both organisations (expertise and resource), and opportunities such as external funding or points of influence.

However, colleagues are encouraged to engage with any aspect of the ARI, via any route (page 12), in addition to targeted strategic institutional activity.





Collaborative infrastructure

This section outlines the infrastructure available across both institutions to support the collaboration and outlines the governance of the collaboration.

Collaborative contact points

Contact points provide a first port of call for questions and facilitate introductions. Please also keep them informed of new collaborations or key successes.

The **Policy Leeds** team will act as the University of Leeds contact point. Please email **Juliet Jopson** at policyleeds@leeds.ac.uk.

The Intelligence and Policy team will act as the Leeds City Council contact point. Please email **Mike Eakins** at policy@leeds.gov.uk.

Data sharing

Research can both use and generate data: it is important that such data is stored and shared appropriately and in ways consistent with legal and ethical obligations.

The **Leeds City Council Open Data page** provides a list of open access LCC data. Additional metrics can be found on the **Leeds Social Progress Index** and **Leeds Economic Dashboard**.

To request access to non-publicly available Leeds City Council data, please email Richard Irvine, Chief Data Officer, at richard.irvine@nhs.net.

The **Research and Innovation Service (RIS) Contracts** team can support putting appropriate data sharing agreements in place. Find the relevant **Contracts contacts** for your school.

Leeds Institute for Data Analytics, LIDA, can provide support for storage of sensitive data. Please email Dominic Frankis at lida@leeds.ac.uk.

The University of Leeds library can support making research data open access. Email the open research team at researchdataenquiries@library.leeds.ac.uk.

Governance

The collaboration between Leeds City Council and University of Leeds will be managed by the following Governance.

- The Steering Group provides oversight of the collaborative work and ensures appropriate connections are made across the University and Council, and with wider city partners. Steering Group meetings will be held bi-annually.
- The Strategy Liaison Group (SLG) acts as Secretariat to the Steering Group, setting the Steering Group agenda, following up actions and convening Working Groups.
- Working Groups will be convened by the SLG to do the work recommended by the Steering Group and then dissolved once work is complete.

Membership of the Steering Group and Strategy Liaison Group is outlined in Appendix 2.





Routes to engage

This section sets out the different routes that University and Council colleagues can take to positively engage to share expertise and develop collaborative activity.

Opening conversations

There is a two-way offer to match interested colleagues across the organisations to share knowledge and expertise and explore ideas for research collaborations (see: Areas of Research Interest), subject to capacity and a suitable match being found.

Please get in touch with your collaborative contact point as a first step.



Scrutiny boards

Leeds City Council scrutiny boards provide challenge and support to decision makers, and enable the public to voice concerns. The five boards cover the areas of:

- Adults, Health & Active Lifestyles
- Children & Families
- Environment, Housing & Communities
- Infrastructure, Investment & Inclusive Growth
- Strategy & Resources

Researchers can support scrutiny board by sharing expert insights and evidence for their inquiries. The annual work programme for each scrutiny board lists upcoming inquiries: the work programme is published and reviewed each meeting as part of the Board's meeting papers. To offer relevant research for upcoming inquiry meetings, please contact the Board's support officer as listed on the Committee details page for each Board.



Expert groups or policy forum meetings

Leeds City Council regularly convenes expert groups to advise on particular work. They also holds policy network meetings, which act as a forum to bring together policy leads to discuss strategic topics: external members may be invited depending on the conversation.

The institutional contact points will maintain regular communication about opportunities for researchers to provide timely input into discussions. Policy Leeds will then work with its networks at the University to identify relevant research experts to contribute. If you are interested to engage in this way, please let Policy Leeds know of your interest and expertise so we can share appropriate opportunities.

Placements or secondments

Placements or secondments can provide a valuable way to work directly with Council or University colleagues, facilitate knowledge and skills exchange, and increase understanding between the organisations. Due to the larger commitment required, it is likely that placements or secondments would only be supported where there is a good strategic fit and appropriate consideration of resourcing.

Please get in touch with your collaborative contact point as a first step.





Evaluation and communication

This section sets out how the collaboration between Leeds City Council and the University of Leeds will be monitored and evaluated, and the collaborative work will be communicated to colleagues at both institutions and more widely.

Monitoring and evaluation

Monitoring and evaluation of collaborative activity will:

- 1) Inform the Steering Group of progress towards their aims of improving collaboration
- 2) Enable the identification of strategic opportunities or gaps
- 3) Allow better communication of the depth, breadth and value of the collaborative work
- 4) Increase recognition of colleagues who are involved in collaborative work
- 5) Identify areas of good practice that can be shared more widely

Research and impact data

Where possible, we will seek to capture data on collaborations already existing on formal systems at the University and Council, such as grant details, contracts, and impact records. If more detail is needed, colleagues will be approached directly.

Where there is not a formal system that captures activity, then we will rely on colleagues notifying us of new and ongoing activity via their collaborative contact point.

Evaluation of the collaborative framework

Monitoring and evaluation of activities directly instigated by the Collaborative Governance groups will be integrated into delivery of the work, to ensure that activities are effective and support the goals of the Steering Group, and to inform future development of the work.

Reporting

The monitoring and evaluation will underpin reporting to the Steering Group at its bi-annual meetings. A publicly accessible annual report will be made available in the autumn.

Communication

We will work closely with our communication colleagues at both the University of Leeds and Leeds City Council to raise the profile of collaborative work between the two institutions and communicate the value of this to our colleagues, other key local and national partners, and to Leeds citizens.

Policy Leeds communication platforms (website, blog, social media, and internal **Policy engagement intranet** and Engaged Research Teams) will be a key route for dissemination of opportunities and activities relating to the strategic collaboration.

At Leeds City Council, colleagues will be made aware of developments and opportunities via the Leeds Policy Network. To join the mailing list please email policy@leeds.gov.uk.

Further resources

The following resources are available to help researchers navigate the support available at the University of Leeds for research with external partners, and to develop their policy engagement practice.

The **resources for collaboration intranet page** provide researchers with a guide to the systems and support available within the University to facilitate collaborative research with external partner.

A toolkit for researchers wanting to expand their policy engagement knowledge and practice can be found on the **Policy Leeds resource page**.





Appendix 1: Collaborative ecosystem

Table 1. Different collaborations, committees/boards, and initiatives that form the collaborative research-policy engagement ecosystem in which the University of Leeds and Leeds City Council strategic research collaboration is situated.

The table is organised by the level – local, regional, or national – that the collaboration or initiative is mainly focused on. Within that, the items are listed alphabetically.

The collaborations and initiatives are mapped against the 3 pillars of the **Best City Ambition** in Figure 1 on page 7.

Item	Type	Sectors involved	Purpose of group and URL
LOCAL			
CHORAL (Children’s Health Outcomes Research at Leeds) Research Centre	Programme	Public, Academia	<p>This five year programme has three multi-disciplinary groups set up to tackle key areas where research can improve outcomes for children & young people:</p> <ul style="list-style-type: none"> • Children’s cancer translational research - Driving evidence-based improvements in outcomes for children and young people living with and beyond cancer • Improving childhood wellbeing - A partnership to tackle the wider determinants of child health and combat social inequities • Transforming outcomes through data linkage - Delivering a step-change in understanding through innovative data linkages • The Leeds Evidence Innovation Partnership brings together external partners with CHORAL to deliver this change. <p>https://choralresearch.org.uk/</p>
Leeds Academic Health Partnership (LAHP)	Partnership	Public, Academia	<p>The Partnership aims to reduce health inequalities, narrowing the gap between people in deprived and those in more affluent areas by: solving some of the city’s hardest health and care challenges; and uniting our city’s academic strengths with those of the health and care system and industry partners to accelerate the adoption of innovation.</p> <p>https://healthinnovationleeds.com/about/leeds-academic-health-partnership/</p>

Item	Type	Sectors involved	Purpose of group and URL
Leeds ACTS!	Partnership	Academia, Third sector	To bring together expertise of the local community, academia and third sector across Leeds to better make sense of local societal challenges, including inequality, and develop innovative solutions to address them through research, policy, practice. https://doinggoodleeds.org.uk/networks-forums/leedsacts/
Leeds Climate Commission	Committee	Public, Academia, Citizen	Leeds Climate Commission is an independent voice in the city, providing authoritative advice on steps towards a low carbon, climate resilient future so as to inform policies and shape the actions of local organisations and stakeholders. It monitors progress towards meeting the city's carbon reduction targets and recommends actions to keep the city on track. https://www.leedsclimate.org.uk/
Leeds City Council Innovation Arc Partnership	Partnership	Public, Academia	Leeds Innovation District represents a strategic intent of the Universities, Teaching Hospital, and City Council to use their knowledge, civic and land assets to catalyse and accelerate innovation and economic growth throughout the city. https://www.inclusivegrowthleeds.com/leeds-innovation-arc
Leeds Inclusive Anchors	Partnership	Public, Private, Academia	Leeds Inclusive Anchors Network is a group of the city's largest (mainly) public sector employers. They come together and focus on areas where they can make a difference for people as an employer, through procurement, through service delivery or as a civic partner. https://www.inclusivegrowthleeds.com/leeds-anchors
Net Zero city initiative (UoL)	Programme	Public, Academia	As one of the founding partners of the Leeds Climate Commission, the University of Leeds is working with Leeds City Council and other organisations to support a net zero city for Leeds, as part of our Climate Plan commitments. https://sustainability.leeds.ac.uk/climate-principles/
REGIONAL			
Born in Bradford: Age of Wonder	Programme	Public, Academia	Born in Bradford is an internationally-recognised research programme which aims to find out what keeps families healthy and happy by tracking the lives of over 40,000 Bradfordians. We use our findings to develop new and practical ways to work with families and health professionals to improve the health and wellbeing of our communities. https://borninbradford.nhs.uk/
Climate, Energy & Environment Committee (WYCA)	Committee	Public, Private	The Climate, Energy and Environment Committee is authorised to carry out any Non-Mayoral Function of the Combined Authority relating to the climate, energy and the environment, and to advise the Mayor in any aspect of their work that relates to or impacts on these areas. https://westyorkshire.moderngov.co.uk/mgCommitteeDetails.aspx?ID=222
Culture, Heritage & Sport committee (WYCA)	Committee	Public, Private, Academia	This committee carries out any Non-Mayoral Function of the Combined Authority relating to culture, arts, and the creative industries including progressing the elements of the Strategic Economic Framework that fall within the remit of this committee. https://westyorkshire.moderngov.co.uk/mgCommitteeDetails.aspx?ID=223
Economy Committee (WYCA)	Committee	Public, Private, Academia	The committee oversees projects that will realise the region's economic potential by strengthening our global competitiveness, encouraging innovation and enterprise and unlocking small business growth. https://westyorkshire.moderngov.co.uk/mgCommitteeDetails.aspx?ID=253
ESRC Vulnerability and Policing Futures Research Centre	Programme	Academia, Public	The Vulnerability & Policing Futures Research Centre aims to reshape how the police and other organisations work together in order to reduce harm among vulnerable people in society. https://vulnerabilitypolicing.org.uk/

Item	Type	Sectors involved	Purpose of group and URL
Place, Regeneration and Housing Committee (WYCA)	Committee	Public, Private	This committee oversees any Non-Mayoral Function of the Combined Authority relating to place, regeneration and housing, and to advise the Mayor in any aspect of their work that relates to or impacts on these areas. https://westyorkshire.moderngov.co.uk/mgCommitteeDetails.aspx?ID=225
Transport Committee (WYCA)	Committee	Public	The Transport Committee is authorised to carry out any Non-Mayoral Function of the Combined Authority relating to transport, and to advise the Mayor in any aspect of their work that relates to or impacts on these areas. https://westyorkshire.moderngov.co.uk/mgCommitteeDetails.aspx?ID=138
UK Shared Prosperity Local Partnership Group (WYCA)	Committee	Public	Oversee the development & delivery of the UKSPF Local Investment Framework & Plan. https://www.westyorks-ca.gov.uk/growing-the-economy/uk-shared-prosperity-fund/
West Yorkshire Business Board	Committee	Public, Private	Formerly the Leeds City Region Enterprise Partnership Board. https://westyorkshire.moderngov.co.uk/mgCommitteeDetails.aspx?ID=150
West Yorkshire Combined Authority (WYCA) Board	Committee	Public	The Mayor of West Yorkshire sits as the directly elected chair of the West Yorkshire Combined Authority (WYCA), which brings together the local authorities of Bradford, Calderdale, Kirklees, Leeds and Wakefield, working in partnership with the City of York. The committee includes representatives from all the other WYCA committees and acts as the main decision making forum. https://westyorkshire.moderngov.co.uk/mgCommitteeDetails.aspx?ID=133
West Yorkshire Innovation Network (WYCA)	Committee	Public, Academia	Strategic group that brings together key stakeholders to develop a joined-up voice for Innovation West Yorkshire and better support local businesses. https://www.wybusiness-skills.com/business-support/growth-support/connecting-innovation/west-yorkshire-innovation-network/
West Yorkshire Integrated Care Board	Partnership	Public	The role of the West Yorkshire Integrated Care Board is to join up health and care services, improve people's health and wellbeing and reduce health inequalities. https://www.westyorkshire.icb.nhs.uk/
West Yorkshire Scientific Advisory Group	Committee	Public, Academic	Providing expert advice and evidence to the West Yorkshire Mayor to grow our economy, improve health, and tackle inequalities. https://arc-yh.nihr.ac.uk/research/projects/west-yorkshire-scientific-advisory-group-wysag/
White Rose Research & Innovation Group	Partnership	Academia	The White Rose Consortium's function is to add value to the partner universities through collaboration in research, teaching and knowledge exchange. White Rose works with a range of partners from the private and public sector, both in the UK and overseas. https://whiterose.ac.uk/
Health Innovation Yorkshire and Humber	Actor	Public	Health Innovation Yorkshire & Humber is one of 15 organisations set up by NHS England to operate as the key innovation arm of the NHS. They act as a bridge between health care providers, commissioners, academia and industry. https://www.healthinnovationyh.org.uk/
Yorkshire and Humber Applied Research Collaboration (ARC)	Programme	Public, Academia	The NIHR Applied Research Collaboration Yorkshire and Humber is an important programme of applied research, hosted within Bradford Institute for Health Research, and delivered through a partnership of organisations, including NHS organisations, Local Authorities, universities, third sector organisations and industry. Our ARC supports people-powered research that aims to improve health and well-being for our communities. Our themes of healthy childhood, mental health, older people and urgent care are the priorities that have been identified by our NHS partners and the public and will ensure our region will benefit from cutting-edge innovation. https://www.arc-yh.nihr.ac.uk/

Item	Type	Sectors involved	Purpose of group and URL
Yorkshire and Humber Climate Commission	Committee	Public, Private, Third sector	The Yorkshire and Humber Climate Commission is an independent advisory body set up to bring actors from the public, private and third sectors together to support and guide ambitious climate actions across the region. https://yorksandhumberclimate.org.uk/
Yorkshire Policy Collaboration	Partnership	Academia	The Yorkshire Policy Collaboration aims to better connect social science research to policy. It is made up of the Universities of Leeds, York, Sheffield and Huddersfield, bringing together the ESRC Impact Acceleration Account investments held by these institutions, to strengthen the influence and impact of social science research on policy (co)design, capability and delivery at the local and regional levels.
Yorkshire Universities	Partnership	Academia	Members: Leeds Arts University; Leeds Conservatoire; Leeds Beckett University; Leeds Trinity University; Sheffield Hallam University; University of Bradford; University of Huddersfield; University of Hull; University of Leeds; University of Sheffield; University of York; and York St John University. www.yorkshireuniversities.ac.uk
YPERN (Yorkshire & Humber Policy Engagement Research Network)	Programme	Public, Academia	By enhancing the effectiveness of inclusive regional development policy and strategy, Y-PERN will play a critical role in fulfilling the commitment made in the Memorandum of Understanding between Yorkshire Universities (YU) and Yorkshire and Humber Councils (YHC) to work together to identify actions and solutions to some of the major opportunities and challenges facing the region. https://y-pern.org.uk/
YPIP (Yorkshire Policy Innovation Partnership)	Programme	Public, Academia, Third sector	Yorkshire Policy Innovation Partnership (YPIP) is a research programme that will coordinate initiatives, evidence and learnings to help reduce inequalities and address climate change in Yorkshire and the Humber. It builds on the YPERN partnership of Yorkshire Universities and Yorkshire and Humber Councils, to also work closely with community partners. https://www.leeds.ac.uk/news-working-business/news/article/5513/major-partnership-to-address-policy-challenges-in-yorkshire-and-the-humber
YU Regional Development Group (Yorkshire & West Yorks)	Committee	Academia	Interface of collaboration and partnership between YU member institutions and between universities and other partners in Yorkshire working together on place-based development. https://yorkshireuniversities.ac.uk/regional-development-group/
NATIONAL			
Centre for Cultural Value	Programme	Academia, Private	The Centre for Cultural Value are a national research centre based at the University of Leeds, funded by the UKRI Arts and Humanities Research Council, Arts Council England and Paul Hamlyn Foundation. They work alongside cultural practitioners and organisations, academics, funders and policymakers to connect research evidence to policy development and expand discussion on cultural value. https://www.culturalvalue.org.uk/
Climate Change Committee	Committee	Public, Academia, Private	The Climate Change Committee (CCC) is an independent, statutory body established under the Climate Change Act 2008. They advise the UK and devolved governments on emissions targets and to report to Parliament on progress made in reducing greenhouse gas emissions and preparing for and adapting to the impacts of climate change. https://www.theccc.org.uk/
Core Cities Group	Partnership	Public	Its mission is to unlock the full potential of our great city regions to create a stronger, fairer economy and society. They are an alliance of 11 cities - Belfast, Birmingham, Bristol, Cardiff, Glasgow, Leeds, Liverpool, Manchester, Newcastle, Nottingham and Sheffield. https://www.corecities.com/

Item	Type	Sectors involved	Purpose of group and URL
Health and Social Care Hub	Partnership	Public, Academia	Led by the Department for Health and Social Care, the Leeds Health and Social Care Hub plans to create new opportunities for health and social care professionals and boost for the local economy. https://www.gov.uk/government/news/leeds-health-and-social-care-hub-launches-to-improve-outcomes-across-the-region Vision document: https://www.leedsandYorkpft.nhs.uk/news/wp-content/uploads/sites/4/2022/07/DHSC-Leeds-Health-Hub-FINAL-hi-res.pdf
Marmot City	Partnership	Public, Academia	Leeds is working towards becoming a Marmot City, building on existing system-wide partnerships and strategic aims to tackle health inequalities in the city. Becoming a Marmot City means taking action to reduce health inequalities by focusing on the social determinants of health as set out in the most recent Marmot report, "Build Back Fairer". https://www.instituteofhealthequity.org/taking-action/marmot-places
N8 Research Partnership	Partnership	Academia	The N8 Research Partnership is a collaboration of the eight most research intensive Universities in the North of England: Durham, Lancaster, Leeds, Liverpool, Manchester, Newcastle, Sheffield and York. The N8 aims to maximise the impact of this research base by: promoting collaboration; establishing innovative research capabilities & programmes of national and international prominence; and driving economic growth. https://www.n8research.org.uk/
National Wealth Fund	Actor	Public	The National Wealth Fund builds on the success of the former UK Infrastructure Bank. With a total capital of £27.8 billion, its remit now extends beyond infrastructure to support delivery of the industrial strategy in areas where there is an undersupply in private finance. Its headquarters are located in Leeds. https://www.ukib.org.uk/
UK Centre for Greening Finance and Investment	Programme	Academia, Private, Public	The UK Centre for Greening Finance and Investment (CGFI) is a national centre established to accelerate the adoption and use of climate and environmental data and analytics by financial institutions internationally. https://www.cgfi.ac.uk/



Appendix 2: Governance

Steering Group

The Steering group is composed of the following members.

- Fiona Bolam, Economy and Skills, Leeds City Council
- Sarah Bronsdon, Leeds Academic Health Partnership
- Polly Cook, Climate, Energy and Green Spaces, Leeds City Council
- Tony Cooke, Health Partnerships, Leeds City Council
- Thom Cooper, Sustainability, University of Leeds
- Gary Dymski, Leeds University Business School, University of Leeds
- Mike Eakins, Strategy and Resources, Leeds City Council
- Susan Grant-Muller, Leeds Institute of Data Analytics, University of Leeds
- Sarah Hall, Research and Innovation Services, University of Leeds
- Richard Irvine, Leeds Office of Data Analytics, Leeds City Council
- Karen Murgatroyd, International Relations, Leeds City Council
- Kate Pangbourne, Leeds Social Sciences Institute, University of Leeds
- Mariana Pexton, Interim Chief Executive, Leeds City Council
- (Chair) Nick Plant, Deputy Vice Chancellor, Research and Innovation, University of Leeds
- Peter Storrie, Children and Families, Leeds City Council
- Stuart Taberner, Horizons Institute, University of Leeds
- Louise Waite, Leeds Social Sciences Institute, University of Leeds
- Caron Walker, Public Health, Leeds City Council

The Strategy Liaison Group

The Strategy Liaison Group is made up of the following members.

- Luke Andrews, Strategy and Resources, Leeds City Council
- Rosie Armitage, Strategy and Resources, Leeds City Council
- Sarah Bronsdon, Leeds Academic Health Partnership
- Gary Dymski, Leeds University Business School, University of Leeds
- Mike Eakins, Strategy and Resources, Leeds City Council
- Marc Eatough, Research and Innovation Services, University of Leeds
- (Chair) Juliet Jopson, Policy Leeds, University of Leeds
- Abi Rowson, Horizons Institute, University of Leeds
- Claire Smithson, Policy Leeds, University of Leeds
- Stuart Taberner, Horizons Institute, University of Leeds
- Louise Waite, Leeds Social Science Institute, University of Leeds
- Sherif Youssef, Leeds Social Sciences Institute, University of Leeds

Contact information

For further information, please contact the Policy Leeds team, Research and Innovation Services, University of Leeds, policyleeds@leeds.ac.uk.

